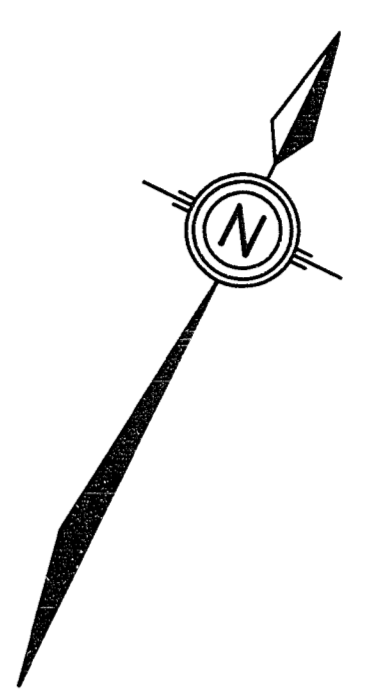
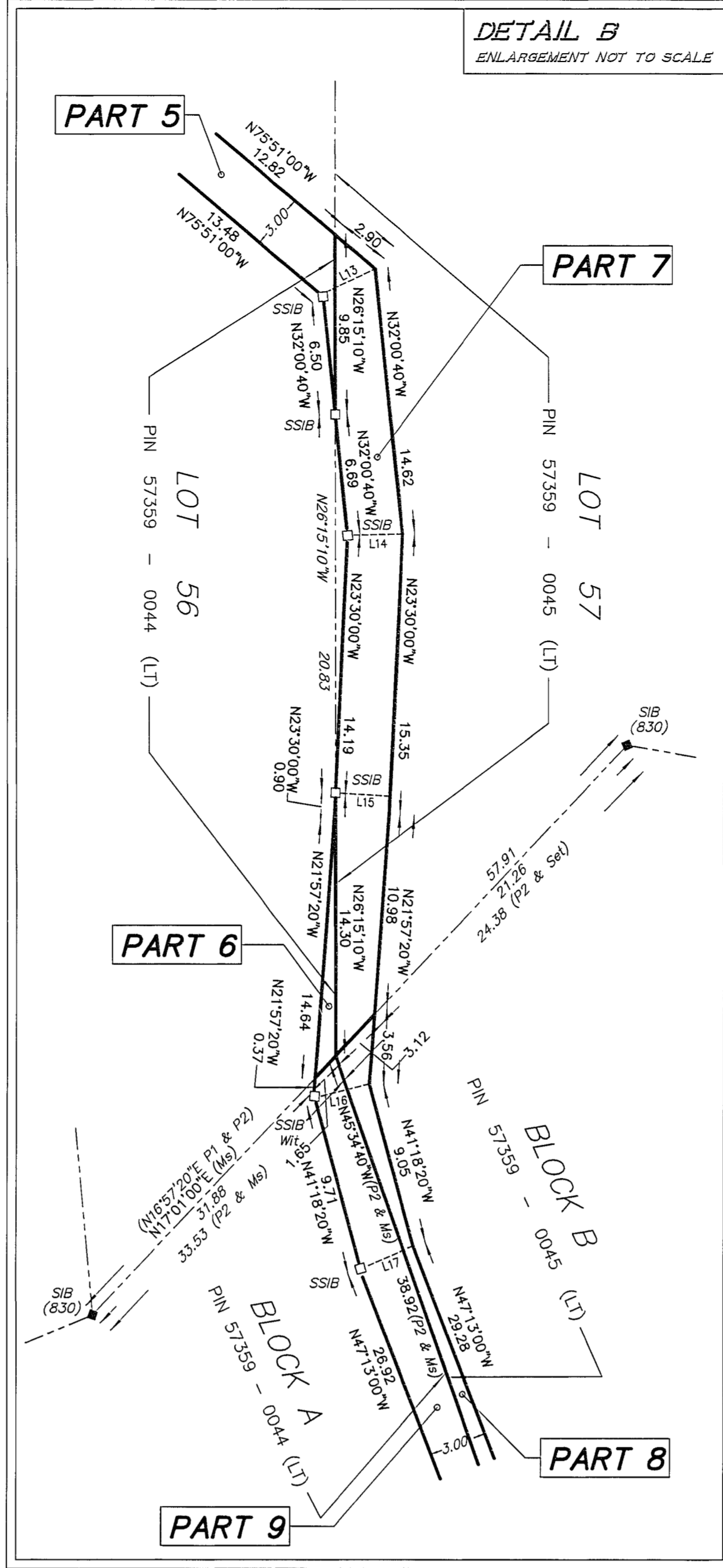
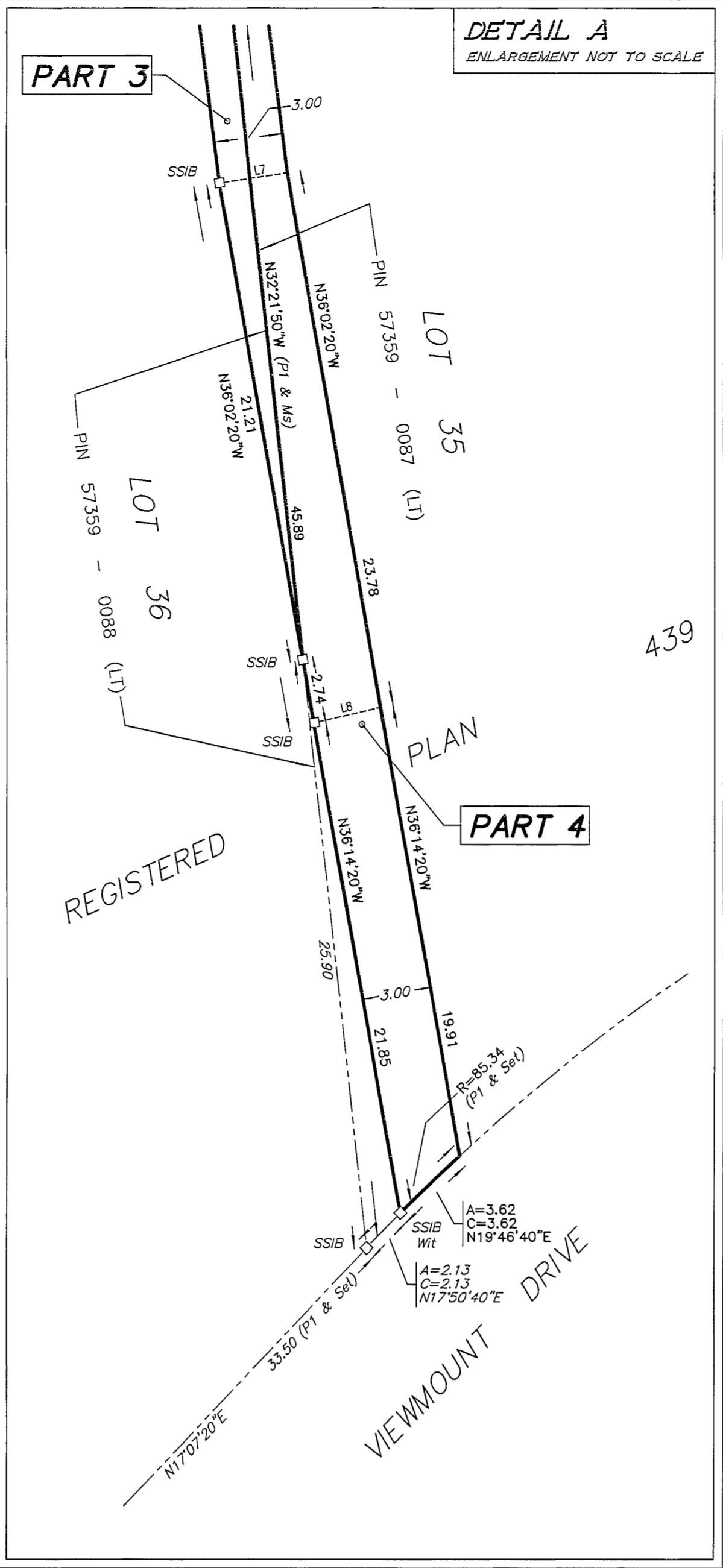
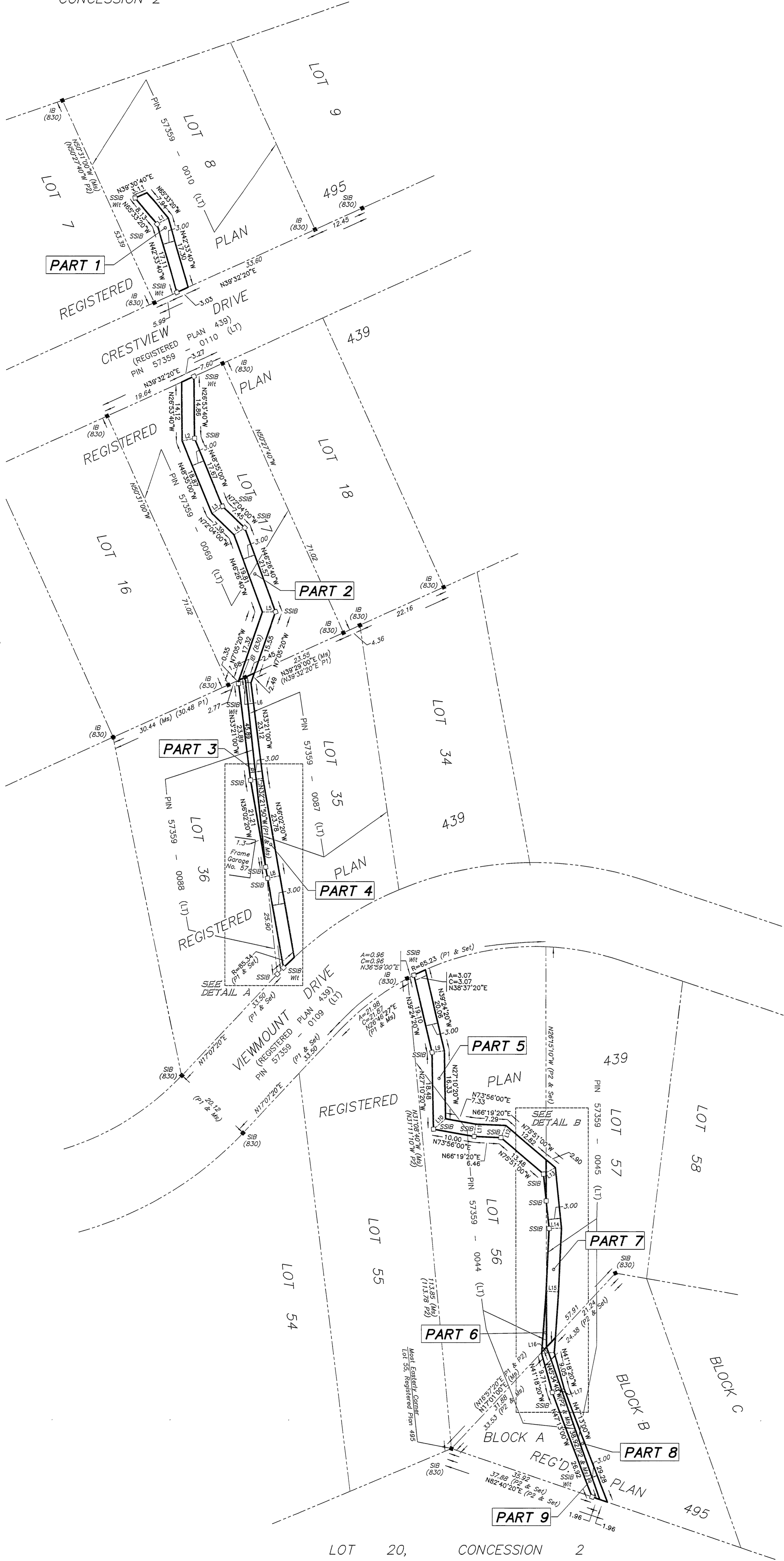


LOT 20  
CONCESSION 2



SCHEDULE				
PART	LOT	REG'D. PLAN	PIN	AREA (HA)
1	PL. 4	495	PL. 57359-0016 (LT)	0.028
2	PL. 37		PL. 57359-0098 (LT)	0.023
3	PL. 36	RE290654	PL. 57359-0098 (LT)	0.023
4	PL. 35	RE290652	PL. 57359-0087 (LT)	0.016
5	PL. 54		PL. 57359-0044 (LT)	0.029
6	PL. 57		PL. 57359-0045 (LT)	0.012
7	PL. BLOCK B		PL. 57359-0044 (LT)	0.029
8	PL. BLOCK A		PL. 57359-0042 (LT)	0.021
9	PL. 38	RE290224	PL. 57359-0042 (LT)	0.011
10	PL. 38		PL. 57359-0041 (LT)	0.011
11	PL. 38		PL. 57359-0038 (LT)	0.012
12	PL. 38		PL. 57359-0038 (LT)	0.012
13	PL. 38	RE290655	PL. 57359-0038 (LT)	0.012

PLAN 49R - 19493  
RECEIVED AND DEPOSITED  
December 03, 2019  
(0216)  
Representative for LAND REGISTRAR FOR THE LAND TITLES DIVISION OF RENFREW (No. 42)  
I REQUIRE THIS PLAN TO BE DEPOSITED UNDER THE LAND TITLES ACT  
DATE: DECEMBER 3, 2019  
HUGH S. COULTS

PLAN OF SURVEY  
OF PART OF  
LOTS 17, 35, 36, 56 & 57  
REGISTERED PLAN 439  
OF PART OF  
LOTS 8, 32, 33, 38 & 39  
AND PART OF  
BLOCKS A & B  
REGISTERED PLAN 495  
TOWNSHIP OF GREATER MADAWASKA  
COUNTY OF RENFREW  
SCALE 1 : 500  
ADAM KASPRZAK SURVEYING LTD.

BEARING NOTE:  
BEARINGS ARE UTM GRID, DERIVED FROM GPS OBSERVATIONS ON ORP1 AND ORP2, HAVING A RESULTANT BEARING OF N89°17'20"E, UTM ZONE 18 (7° WEST LONGITUDE) NAD 83 (CSRS).  
FOR BEARING COMPARISONS, THE FOLLOWING ROTATIONS WERE APPLIED:  
P1 & P2 - 1°17'20" CLOCKWISE

METRIC NOTE:  
DISTANCES AND COORDINATES SHOWN ON THIS PLAN ARE IN METRES AND CAN BE CONVERTED TO FEET BY DIVIDING BY 0.3048.

DISTANCE NOTE:  
DISTANCES SHOWN ON THIS PLAN ARE GROUND DISTANCES AND CAN BE CONVERTED TO GRID DISTANCES BY MULTIPLYING BY A COMBINED SCALE FACTOR OF 0.999756.

NOTE:  
SSIB PLANTED DUE TO INSUFFICIENT OVERBURDEN.

INTEGRATION DATA:

POINT ID	NORTHING	EASTING
ORP1	5 015 528.13	360273.78
ORP2	5 015 529.35	360 370.72

COORDINATE VALUES ARE TO RURAL ACCURACY PER SEC. 14 (2) OF O. REG. 216/10 AND CANNOT, IN THEMSELVES, BE USED TO RE-ESTABLISH CORNERS OR BOUNDARIES SHOWN ON THIS PLAN.

LEGEND (if Applicable)

IB	IRON BARS
SSB	STANDARD IRON BAR
SSIB	SHORT STANDARD IRON BAR
M	MONUMENT FOUND
CP	CONCRETE PIN
WT	WITNESS
RB	ROCK BAR
UK	UNKNOWN
MS	MEASURED
ORP	ORIGINATED REFERENCE POINT
(830)	E. W. PETZOLD, O.L.S.
(AK)	ADAM KASPRZAK SURVEYING LTD.
(P1)	REGISTERED PLAN 439
(P2)	REGISTERED PLAN 495

SURVEYOR'S CERTIFICATE  
I CERTIFY THAT:  
1. THIS SURVEY AND PLAN ARE CORRECT AND IN ACCORDANCE WITH THE SURVEY ACT, THE SURVEYORS ACT, THE LAND TITLES ACT AND THE REGULATIONS MADE UNDER THEM.  
2. THE SURVEY WAS COMPLETED ON SEPTEMBER 26th, 2019.  
DATE: DECEMBER 3, 2019  
ADAM KASPRZAK SURVEYING LTD.  
ONTARIO LAND SURVEYOR

AK ADAM KASPRZAK SURVEYING LTD.  
10 ARGYLE ST. S., P.O. BOX 633  
RENFREW ONTARIO K7V 4E7  
PHONE (800) 452-3008  
SCALE: 1 : 500 REF: 18-2052 F  
FILE No:

NUM	BEARING	DISTANCE
L1	N35°56'40"E	3.06
L2	N57°15'45"E	3.05
L3	N29°42'40"E	3.08
L4	N50°44'40"E	3.08
L5	N63°14'00"E	3.19
L6	N69°44'40"E	3.08
L7	N55°18'30"E	3.00
L8	N52°10'20"E	3.00
L9	N56°42'40"E	3.02
L10	N32°22'40"E	3.88
L11	N19°52'20"E	3.01
L12	N 4°40'40"W	3.17
L13	N36°04'20"E	3.23
L14	N67°14'40"E	3.01
L15	N67°18'20"E	3.00
L16	N59°20'20"E	3.04
L17	N45°44'20"E	3.00