

THE CORPORATION OF THE TOWNSHIP OF GREATER MADAWASKA

BY-LAW NUMBER 59-2015

A By-law to amend By-law Number 22-2003 of the Corporation of the Township of Greater Madawaska, as amended.

PURSUANT TO SECTION 34 OF THE PLANNING ACT THE TOWNSHIP OF GREATER MADAWASKA HEREBY ENACTS AS FOLLOWS:

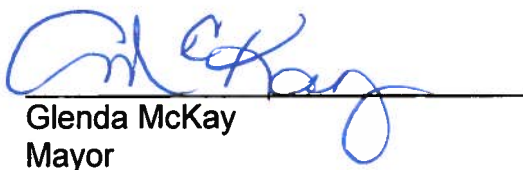
1. THAT By-law Number 22-2003, as amended, be and the same is hereby further amended as follows:
 - (a) Schedule "A" is amended by rezoning those lands described as Part of Lot 21, Concession 7, geographic Township of Bagot, from Limited Service Residential (LSR) to Limited Service Residential-Exception Fifty-Three (LSR-E53), as shown on the attached Schedule "A".
 - (b) By adding the following new subsection 7.3(bbb) Limited Service Residential-Exception Fifty-Three (LSR-E53) to SECTION 7.0 - REQUIREMENTS FOR LIMITED SERVICE RESIDENTIAL (LSR) ZONE, immediately following the subsection 7.3(aaa) Limited Service Residential-Exception Fifty-Two (LSR-E52):

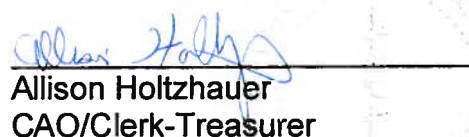
“(aaa) Limited Service Residential-Exception Fifty-Three (LSR-E53)

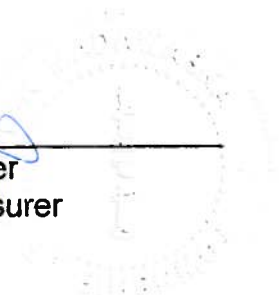
Notwithstanding subsection 3.3.1 of this By-law to the contrary, for those lands described as Part of Lot 21, Concession 7, geographic Township of Bagot, and delineated as Limited Service Residential-Exception Fifty-Three (LSR-E53) on Schedule "A" to this By-law, a shed shall be permitted prior to the construction of a dwelling.”
2. THAT save as aforesaid all other provisions of By-Law 22-2003, as amended, shall be complied with.
3. This By-law shall come into force and take effect on the day of final passing thereof.

READ a first and second time this 15th day of December, 2015.

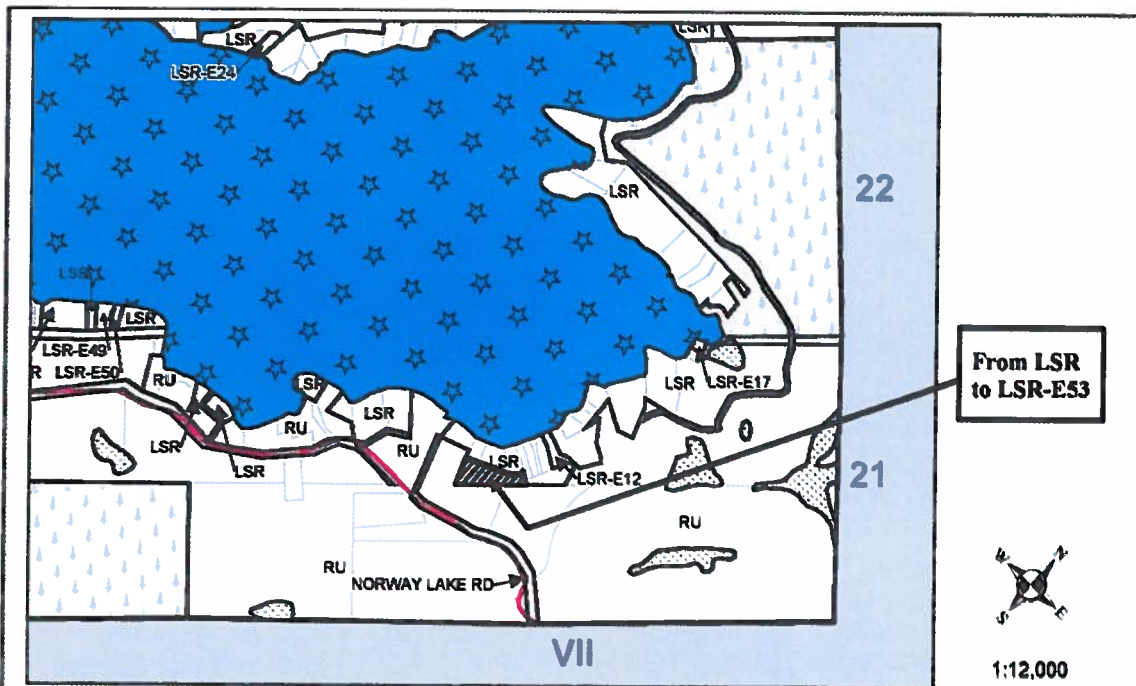
READ a third time and passed this 15th day of December, 2015.


Glenda McKay
Mayor


Allison Holtzauer
CAO/Clerk-Treasurer



**SCHEDULE "A"
BY-LAW 59-2015**



**CORPORATION OF THE
TOWNSHIP OF GREATER MADAWASKA**

This is Schedule "A" to By-law Number 59-2015
Passed the 15th day of December 2015.

Signatures of Signing Officers:

[Signature]
Mayor

[Signature]
Clerk

LEGEND

- | | |
|---|---|
| LSR Limited Service Residential | -E1 Exception Zone |
| RU Rural | Blue Open Water |
| EP Environmental Protection (EP) | Red Shaded Area affected by this Amendment From LSR to LSR-E53 |
| Crown Land | |