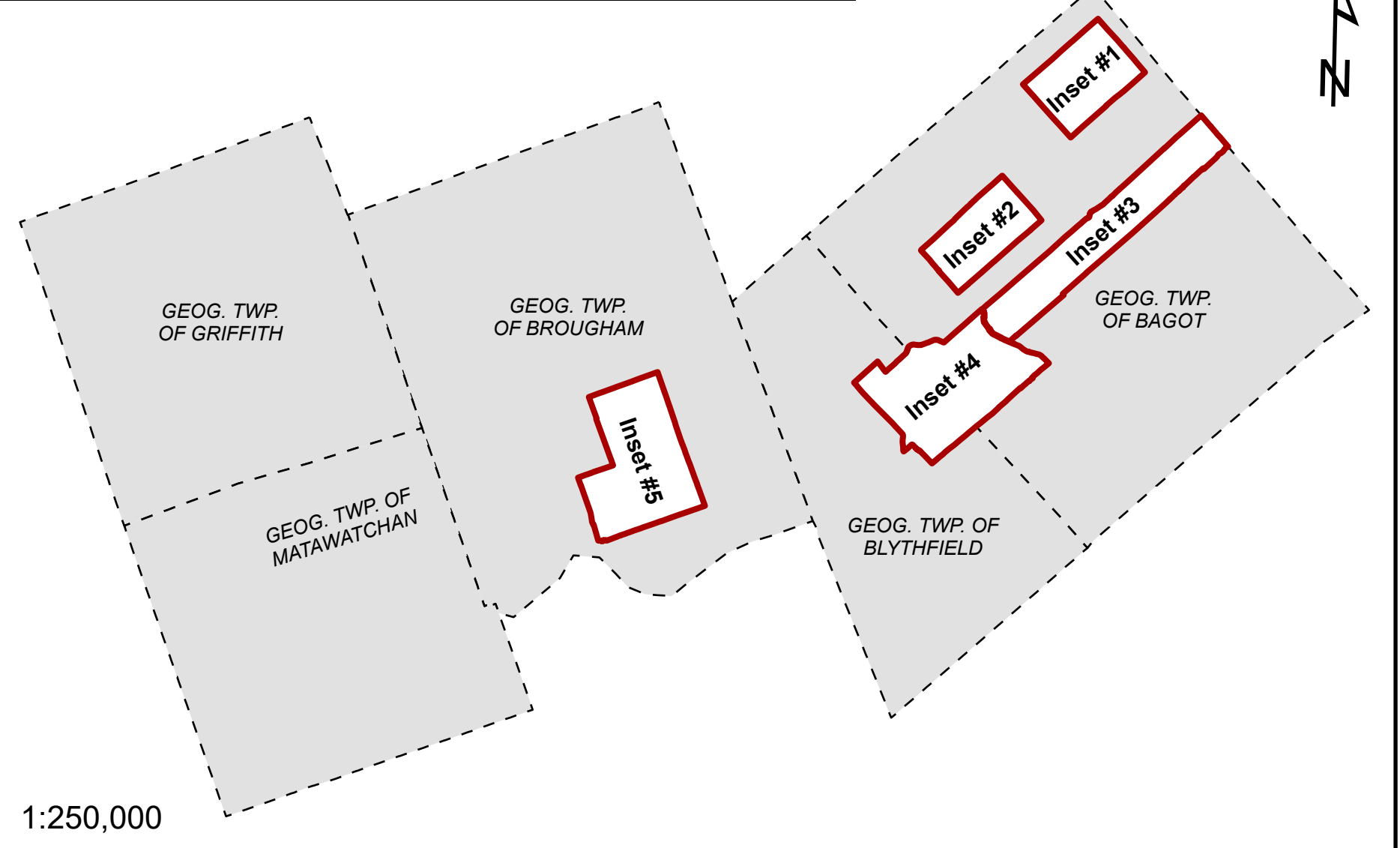


THE TOWNSHIP OF GREATER MADAWASKA ZONING BY-LAW

SCHEDULE "D" - INSET MAPS 1-5

TOWNSHIP OF GREATER MADAWASKA KEY MAP



BASE MAP FEATURES

ZONING LEGEND

- | | | |
|-------------------------------|---|--|
| PARCEL | RESIDENTIAL ONE (R1) | EXTRACTIVE INDUSTRIAL RESERVE - SAND AND GRAVEL (EMR - SG) |
| COUNTY ROAD | RURAL RESIDENTIAL (RR) | MINING INDUSTRIAL (MM) |
| PROVINCIAL HIGHWAY | LIMITED SERVICE RESIDENTIAL (LSR) | MINING INDUSTRIAL RESERVE (MMR) |
| MUNICIPAL MAINTAINED | MOBILE HOME PARK (MHP) | LIGHT INDUSTRIAL (LI) |
| PRIVATE ROAD | HAMLET COMMERCIAL (HAC) | COMMUNITY FACILITY (CF) |
| SEASONAL MUNICIPAL MAINTAINED | HIGHWAY COMMERCIAL (HC) | ENVIRONMENTAL PROTECTION (EP) |
| CROWN ROAD | TOURISM COMMERCIAL (TC) | NATURAL HERITAGE FEATURE (NHF) |
| AT CAPACITY LAKES | GENERAL INDUSTRIAL (GI) | NATURAL HERITAGE FEATURE (NHF-E1) |
| WATERBODY | DISPOSAL INDUSTRIAL (DI) | OPEN SPACE (OS) |
| WATERCOURSE | EXTRACTIVE INDUSTRIAL (EM) | RURAL (RU) |
| K AND P RAIL TRAIL | EXTRACTIVE INDUSTRIAL RESERVE - BEDROCK (EMR - B) | EXCEPTION ZONE |
| INACTIVE WASTE DISPOSAL SITE | | |

