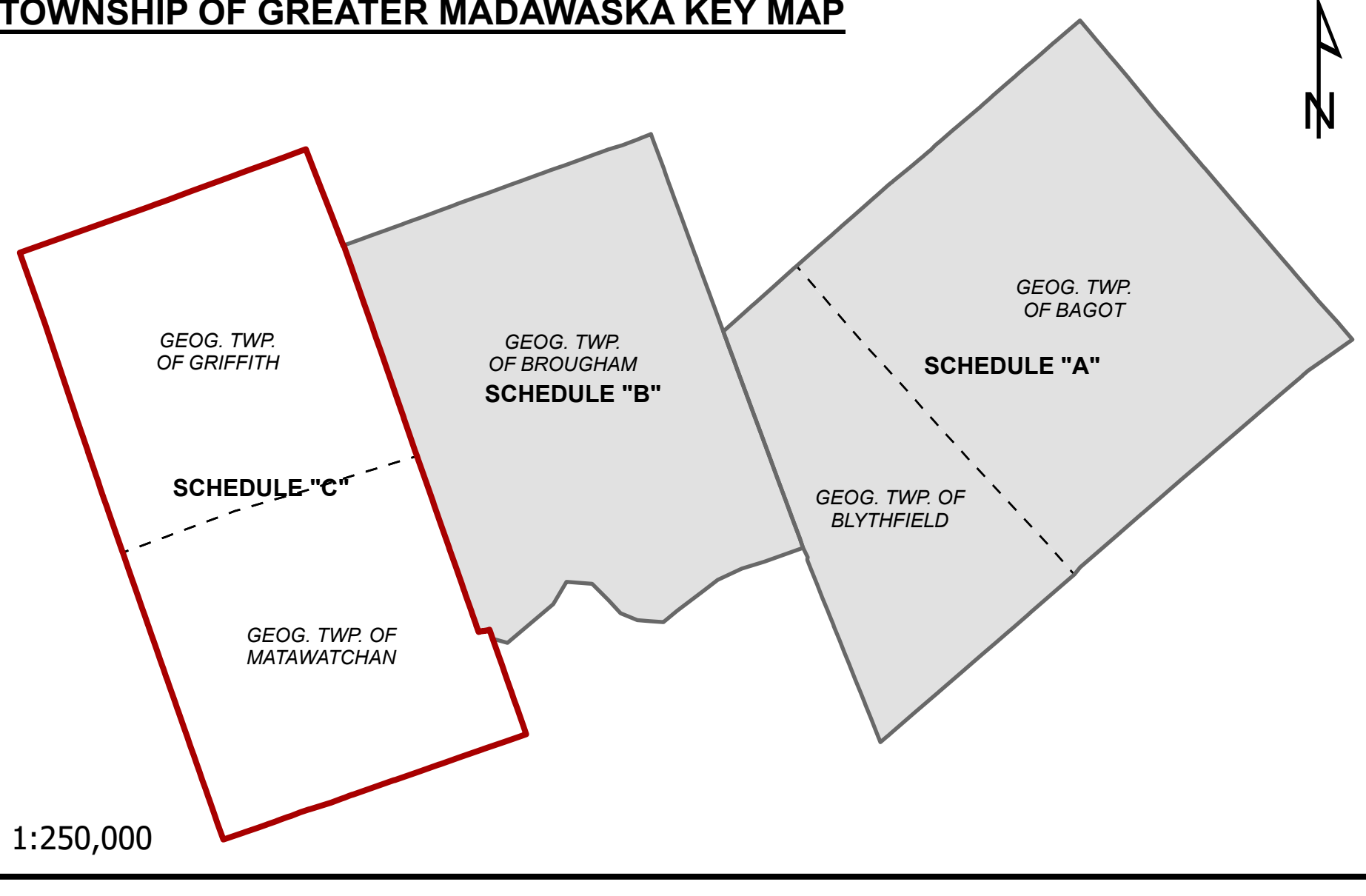


THE TOWNSHIP OF GREATER MADAWASKA ZONING BY-LAW **DRAFT**

SCHEDULE "C" - GEOGRAPHIC TOWNSHIPS OF GRIFFITH AND MATAWATCHAN

Date Exported: 2024-04-16

TOWNSHIP OF GREATER MADAWASKA KEY MAP



1:250,000

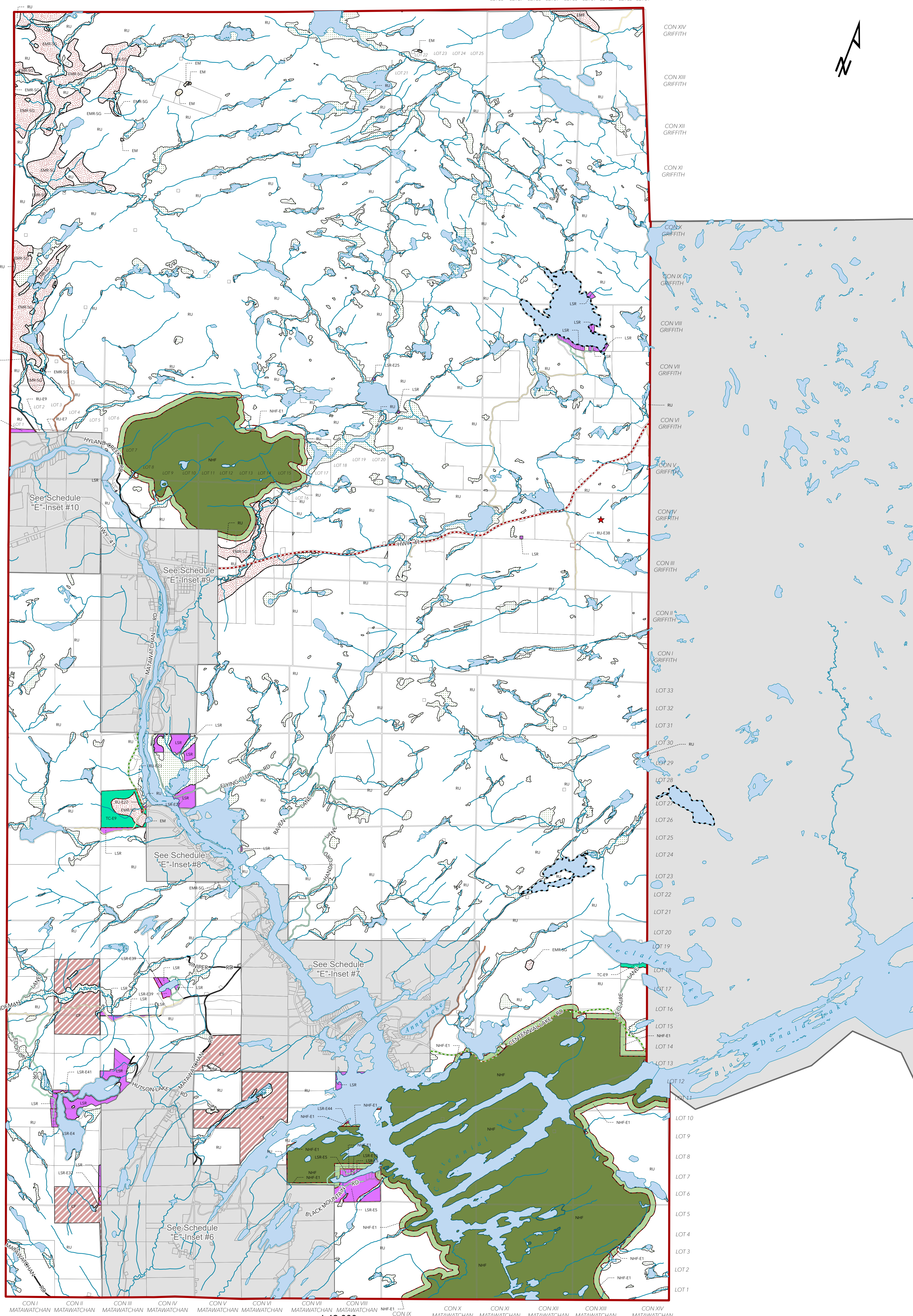


BASE MAP FEATURES

- PARCEL
- COUNTY ROAD
- PROVINCIAL HIGHWAY
- MUNICIPAL MAINTAINED
- PRIVATE ROAD
- SEASONAL MUNICIPAL MAINTAINED
- CROWN ROAD
- AT CAPACITY LAKES
- WATERBODY
- WATERCOURSE
- K AND P RAIL TRAIL
- INACTIVE WASTE DISPOSAL SITE

ZONING LEGEND

- RESIDENTIAL ONE (R1)
- RURAL RESIDENTIAL (RR)
- LIMITED SERVICE RESIDENTIAL (LSR)
- MOBILE HOME PARK (MHP)
- HAMLET COMMERCIAL (HAC)
- HIGHWAY COMMERCIAL (HC)
- TOURISM COMMERCIAL (TC)
- GENERAL INDUSTRIAL (GM)
- DISPOSAL INDUSTRIAL (DM)
- EXTRACTIVE INDUSTRIAL (EM)
- EXTRACTIVE INDUSTRIAL RESERVE - BEDROCK (EMR - B)
- EXTRACTIVE INDUSTRIAL RESERVE - SAND AND GRAVEL (EMR - SG)
- MINING INDUSTRIAL (MM)
- MINING INDUSTRIAL RESERVE (MMR)
- LIGHT INDUSTRIAL (LI)
- COMMUNITY FACILITY (CF)
- ENVIRONMENTAL PROTECTION (EP)
- NATURAL HERITAGE FEATURE (NHF)
- NATURAL HERITAGE FEATURE (NHF-E1)
- OPEN SPACE (OS)
- RURAL (RU)
- EXCEPTION ZONE



CON I MATAWATCHAN CON II MATAWATCHAN CON III MATAWATCHAN CON IV MATAWATCHAN CON V MATAWATCHAN CON VI MATAWATCHAN CON VII MATAWATCHAN CON VIII MATAWATCHAN CON IX MATAWATCHAN CON X MATAWATCHAN CON XI MATAWATCHAN CON XII MATAWATCHAN CON XIII MATAWATCHAN CON XIV MATAWATCHAN

1:42,000

0 1,250 2,500 5,000 7,500 10,000 Meters