

THE TOWNSHIP OF GREATER MADAWASKA ZONING BY-LAW

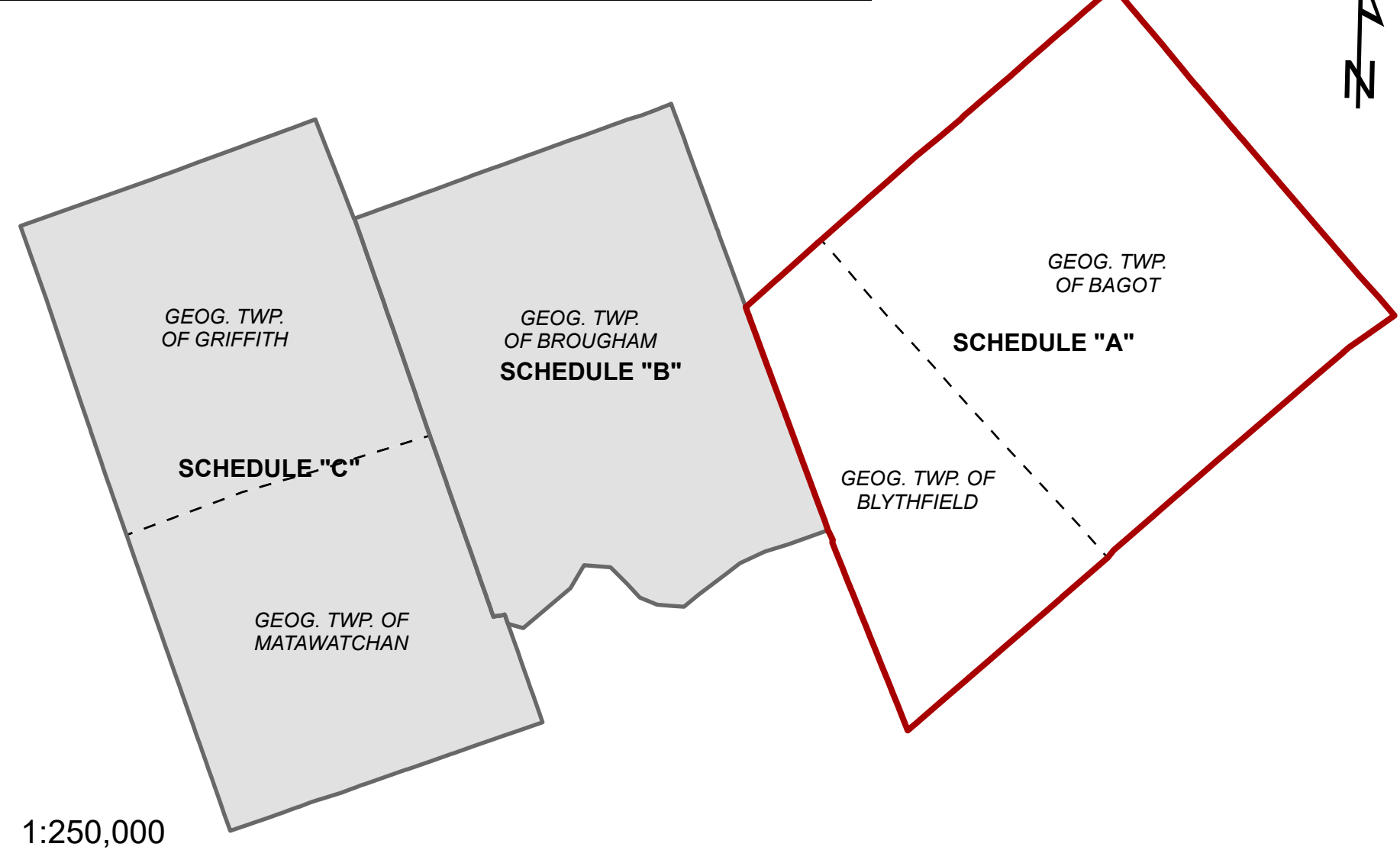


DRAFT

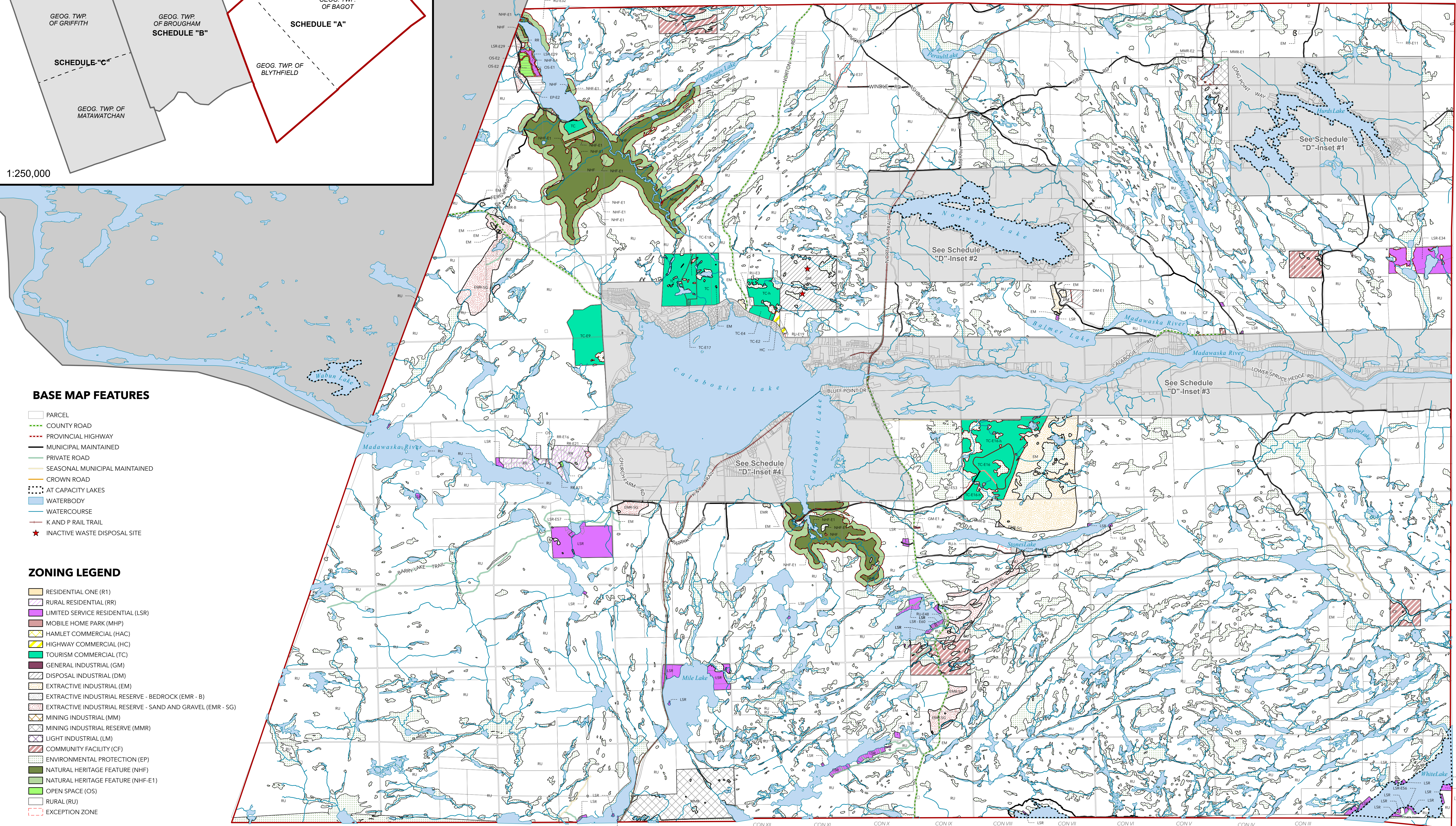
Date Exported: 2024-04-16

SCHEDULE "A" - GEOGRAPHIC TOWNSHIPS OF BAGOT AND BLYTHFIELD

TOWNSHIP OF GREATER MADAWASKA KEY MAP



1:250,000



BASE MAP FEATURES

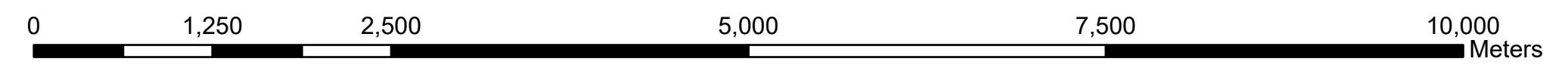
- PARCEL
- COUNTY ROAD
- PROVINCIAL HIGHWAY
- MUNICIPAL MAINTAINED
- PRIVATE ROAD
- SEASONAL MUNICIPAL MAINTAINED
- CROWN ROAD
- AT CAPACITY LAKES
- WATERBODY
- WATERCOURSE
- K AND P RAIL TRAIL
- INACTIVE WASTE DISPOSAL SITE

ZONING LEGEND

- RESIDENTIAL ONE (R1)
- RURAL RESIDENTIAL (RR)
- LIMITED SERVICE RESIDENTIAL (LSR)
- MOBILE HOME PARK (MHP)
- HAMLET COMMERCIAL (HAC)
- HIGHWAY COMMERCIAL (HC)
- TOURISM COMMERCIAL (TC)
- GENERAL INDUSTRIAL (GM)
- DISPOSAL INDUSTRIAL (DM)
- EXTRACTIVE INDUSTRIAL (EM)
- EXTRACTIVE INDUSTRIAL RESERVE - BEDROCK (EMR - B)
- EXTRACTIVE INDUSTRIAL RESERVE - SAND AND GRAVEL (EMR - SG)
- MINING INDUSTRIAL (MM)
- MINING INDUSTRIAL RESERVE (MMR)
- LIGHT INDUSTRIAL (LM)
- COMMUNITY FACILITY (CF)
- ENVIRONMENTAL PROTECTION (EP)
- NATURAL HERITAGE FEATURE (NHF)
- NATURAL HERITAGE FEATURE (NHF-E1)
- OPEN SPACE (OS)
- RURAL (RU)
- EXCEPTION ZONE

CON IX BLYTHFIELD CON VIII BLYTHFIELD CON VII BLYTHFIELD CON VI BLYTHFIELD CON V BLYTHFIELD CON IV BLYTHFIELD CON III BLYTHFIELD CON II BLYTHFIELD CON I BLYTHFIELD CON XII BAGOT CON XI BAGOT CON X BAGOT CON IX BAGOT CON VIII BAGOT CON VII BAGOT CON VI BAGOT CON V BAGOT CON IV BAGOT CON III BAGOT CON II BAGOT CON I BAGOT

1:40,000



LOT 30
LOT 29
LOT 28
LOT 27
LOT 26
LOT 25
LOT 24
LOT 23
LOT 22
LOT 21
LOT 20
LOT 19
LOT 18
LOT 17
LOT 16
LOT 15
LOT 14
LOT 13
LOT 12
LOT 11
LOT 10
LOT 9
LOT 8
LOT 7
LOT 6
LOT 5
LOT 4
LOT 3
LOT 2
LSR-E16
LSR
LOT 1