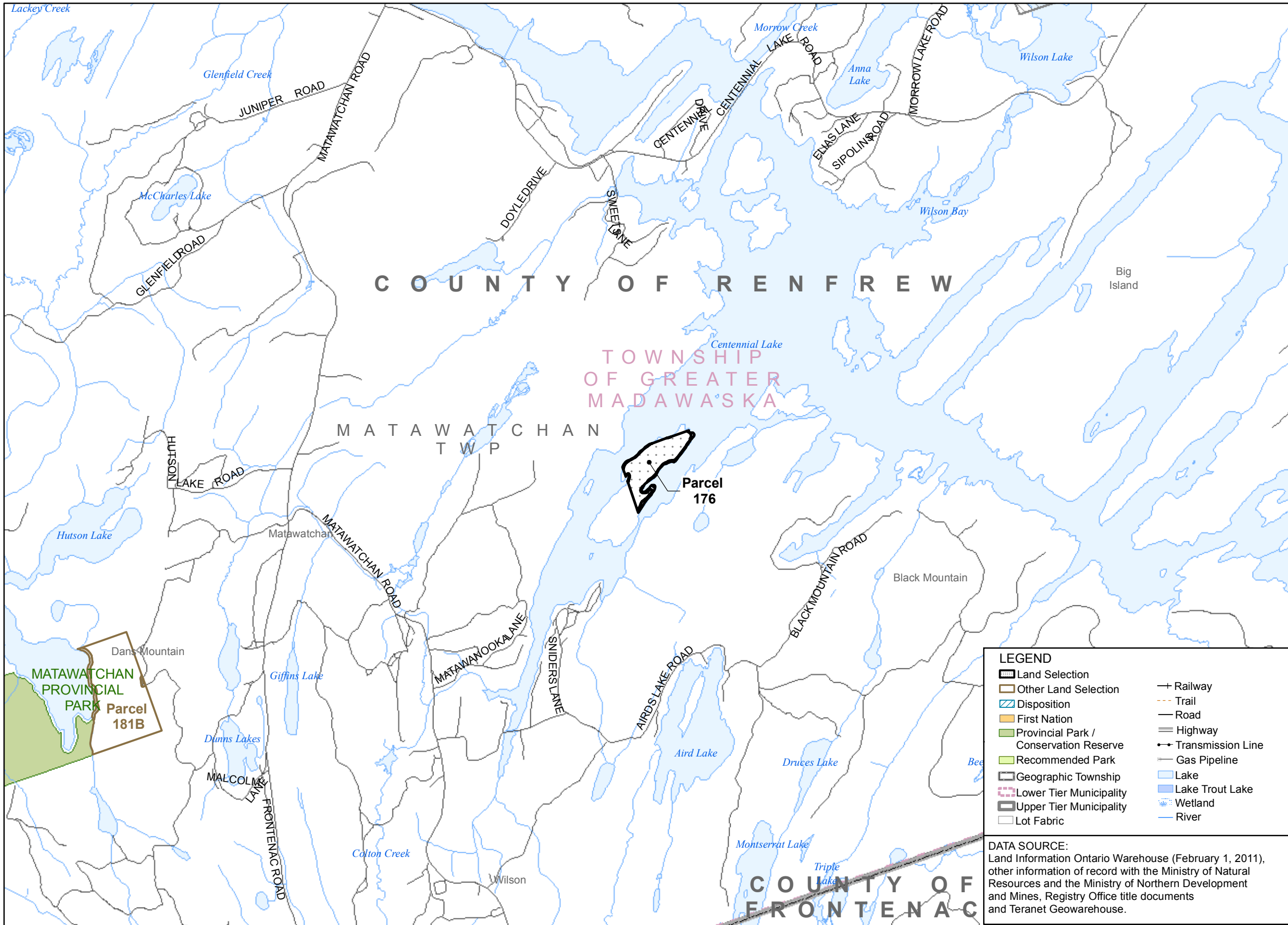
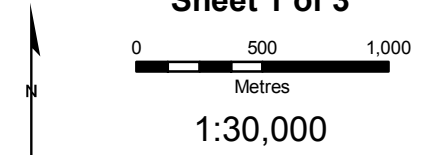


Schedule 5.1A

**ALGONQUIN  
LAND CLAIM  
DESCRIPTIVE PLAN**

**PARCEL 176**

Sheet 1 of 3



**LEGEND**

Land Selection	Railway
Other Land Selection	Trail
Disposition	Road
First Nation	Highway
Provincial Park / Conservation Reserve	Transmission Line
Recommended Park	Gas Pipeline
Geographic Township	Lake
Lower Tier Municipality	Lake Trout Lake
Upper Tier Municipality	Wetland
Lot Fabric	River

**DATA SOURCE:**  
Land Information Ontario Warehouse (February 1, 2011), other information of record with the Ministry of Natural Resources and the Ministry of Northern Development and Mines, Registry Office title documents and Teranet Geowarehouse.

1. **CAUTION: THIS IS NOT A PLAN OF SURVEY**
2. This Descriptive Plan is a graphic illustration of the Settlement Lands identified in the Settlement Agreement of the Algonquin Land Claim. This plan is intended to illustrate the complex inter-relationships between the Settlement Lands and other previous dispositions and alienations of public lands and is necessary to prevent duplicate or overlapping tenure commitments on the same lands.
3. This Descriptive Plan has been prepared from the best available information but without benefit of survey. The absolute and relative positional accuracy of the data shown hereon has not been verified. Discrepancies between different data sources are known to exist. Do not use this Plan as evidence of the location of legal boundaries, township lot fabric, features, or routes. Do not rely on this Plan to determine the extent of parcel areas, the existence of navigable bodies of water nor as a guide for navigation.
4. Any sale, lease or other disposition of lands illustrated hereon made pursuant to the Settlement Agreement of the Algonquin Land Claim is limited to the extent of the un-alienated rights held by the Ministry of Natural Resources and every grant shall be subject to the provisions of the statute of the Bed of Navigable Waters Act, R.S.O. 1990, Chapter B.4.
5. The boundary information must be read in conjunction with all Notes appearing in and on the Plan series and within the terms of the Settlement Agreement. Should the provisions contained on the Descriptive Plan be found to conflict with the terms contained within the Settlement Agreement the terms contained within the Settlement Agreement shall prevail. Nothing hereon contained, except the provision for the application of "The Bed of Navigable Waters Act" aforesaid, shall affect the interpretation which would, apart from this Descriptive Plan, be put upon the words of any letters patent hereafter issued under the Great Seal of the Province of Ontario, or of any lease or other conveyance, or of any contract heretofore or hereafter made under the direction of the Province of Ontario.
6. Survey Instructions from the Surveyor General of Ontario must be obtained prior to establishing any of the boundaries on the ground.

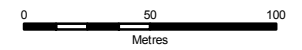
PRODUCED BY:  
The Office of the Surveyor General August 9, 2012  
Ministry of Natural Resources  
© Queen's Printer for Ontario, 2012  
Region4\_Key\_Maps.mxd

# Schedule 5.1A

## ALGONQUIN LAND CLAIM DESCRIPTIVE PLAN

### PARCEL 176

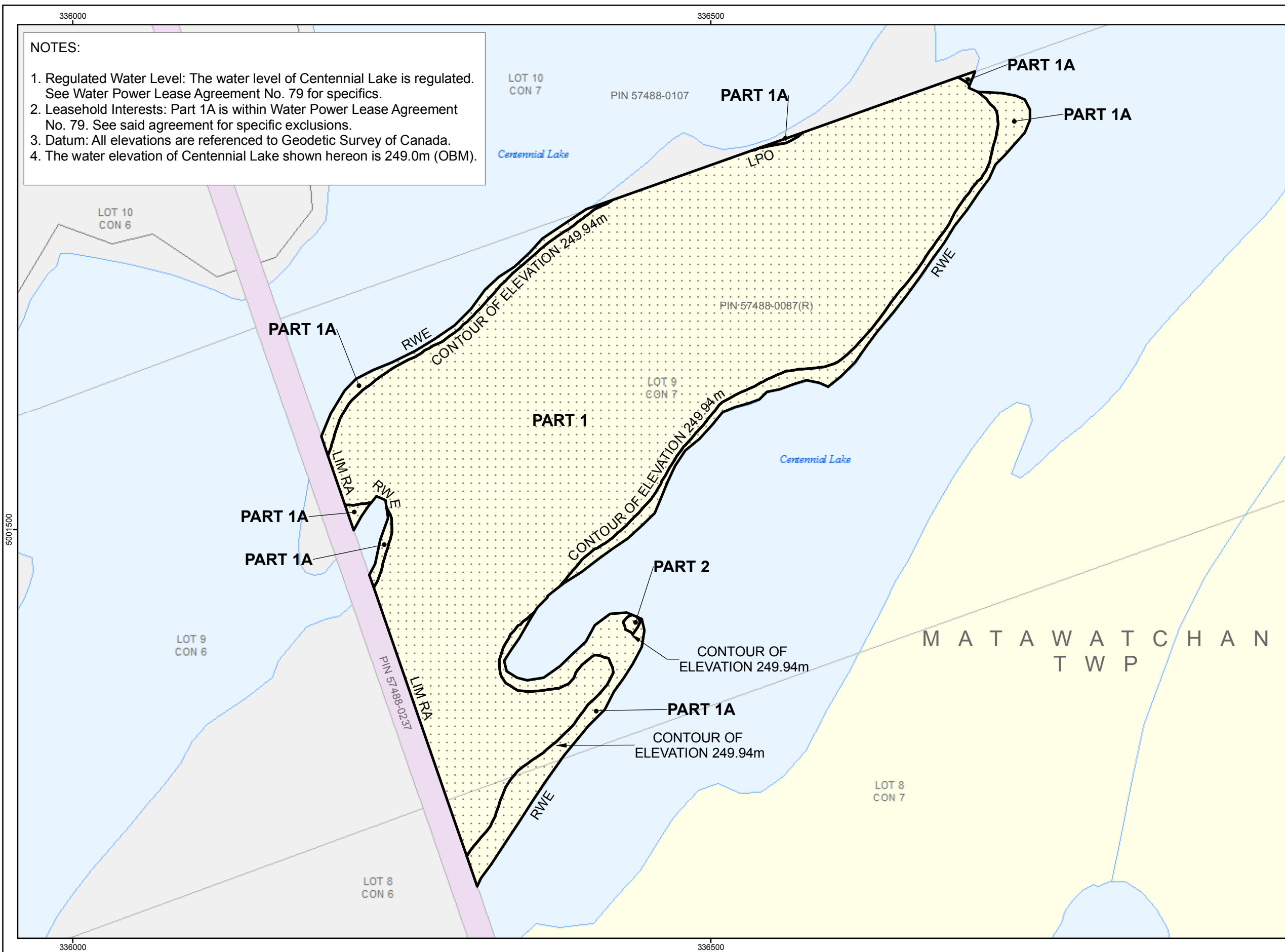
Sheet 2 of 3



1:3,000

#### NOTES:

1. Regulated Water Level: The water level of Centennial Lake is regulated. See Water Power Lease Agreement No. 79 for specifics.
2. Leasehold Interests: Part 1A is within Water Power Lease Agreement No. 79. See said agreement for specific exclusions.
3. Datum: All elevations are referenced to Geodetic Survey of Canada.
4. The water elevation of Centennial Lake shown hereon is 249.0m (OBM).



#### LEGEND

Land Selection	Railway
Other Land Selection	Trail
Disposition	Resource Road
First Nation	Local / Private Road
Crown Land	Municipal Road
Acquired Crown Land	Highway
Municipal Ownership	Transmission Line
Private Ownership	Gas Pipeline
Provincial Park / Conservation Reserve	Lake
Recommended Park	Lake Trout Lake
Mining Claim	Wetland
Geographic Township	River
Lot Fabric	Contour of Elevation
	Flooding Contour

#### NOTES:

1. **CAUTION: THIS IS NOT A PLAN OF SURVEY**  
This map describes the intent of the parcel boundary. The information has been compiled from various sources and the accuracy is not guaranteed. The true location and area on the ground must be determined by survey. Do not rely on this map as a precise indicator of routes, locations of features, nor as a guide for navigation.
2. Survey Instructions from the Surveyor General of Ontario must be obtained prior to establishing any of the boundaries on the ground.
3. Projection: NAD83 (CSRS) UTM Zone 18
4. EXT - Denotes Extended
5. LIM - Denotes Limit
6. LL - Denotes Lot Line
7. LLUP - Denotes Limit of Land Use Permit
8. LPO - Denotes Limit of Private Ownership
9. LPOE - Denotes Limit of Private Ownership and Extended
10. LW - Denotes Limit of Wetland
11. NS - Denotes Not in Site
12. RA - Denotes Road Allowance
13. RWE - Denotes Regulated Water's Edge being the water's edge as affected by the operation of water level control structures, when operated, and otherwise at the water's edge as it occurs naturally.
14. WE - Denotes Water's Edge

#### DATA SOURCE:

Land Information Ontario Warehouse (February 1, 2011), other information of record with the Ministry of Natural Resources and the Ministry of Northern Development and Mines, Registry Office title documents and Teranet Geowarehouse.

#### PRODUCED BY:

The Office of the Surveyor General

August 9, 2012

Ministry of  
Natural Resources



© Queen's Printer for Ontario, 2012

RC176\_OSG\_20120809.mxd

## Schedule 5.1A

**ALGONQUIN  
LAND CLAIM  
DESCRIPTIVE PLAN**

PARCEL 176

SHEET 3 of 3

PART SCHEDULE						
Part #	Description	Area (ha)	Area Included (ha)	Area Not Included (ha)	Action	Comments
PART 1	Unpatented Crown Land	11.5	11.5		Patent	
PART 1A	Unpatented Crown Land between WE and Contour of Elevation 249.94m	1.2	1.2		Excluded	Parties to discuss with public utility the possibility of transfer of lands affected by WPL
PART 2	Unpatented Crown Land	<0.1	<0.1		Patent	
Total Area (ha)		12.7	12.7	0.0		
Total Area (ac)		31.4	31.4	0.0		

NOTE: Total Area as shown is the sum of areas of all parts, including those < 0.1 ha.

PRODUCED BY:  
The Office of the Surveyor General      August 9, 2012



Ministry of  
Natural Resources  
© Queen's Printer for Ontario, 2012